

■ *Business-Critical Continuity™*  
to protect technology infrastructures

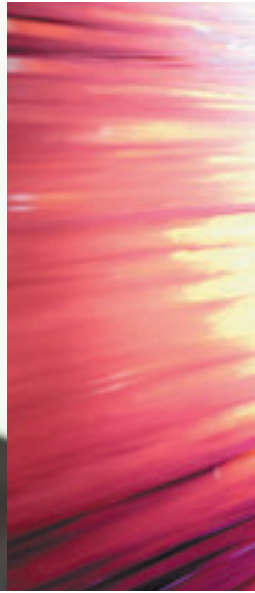
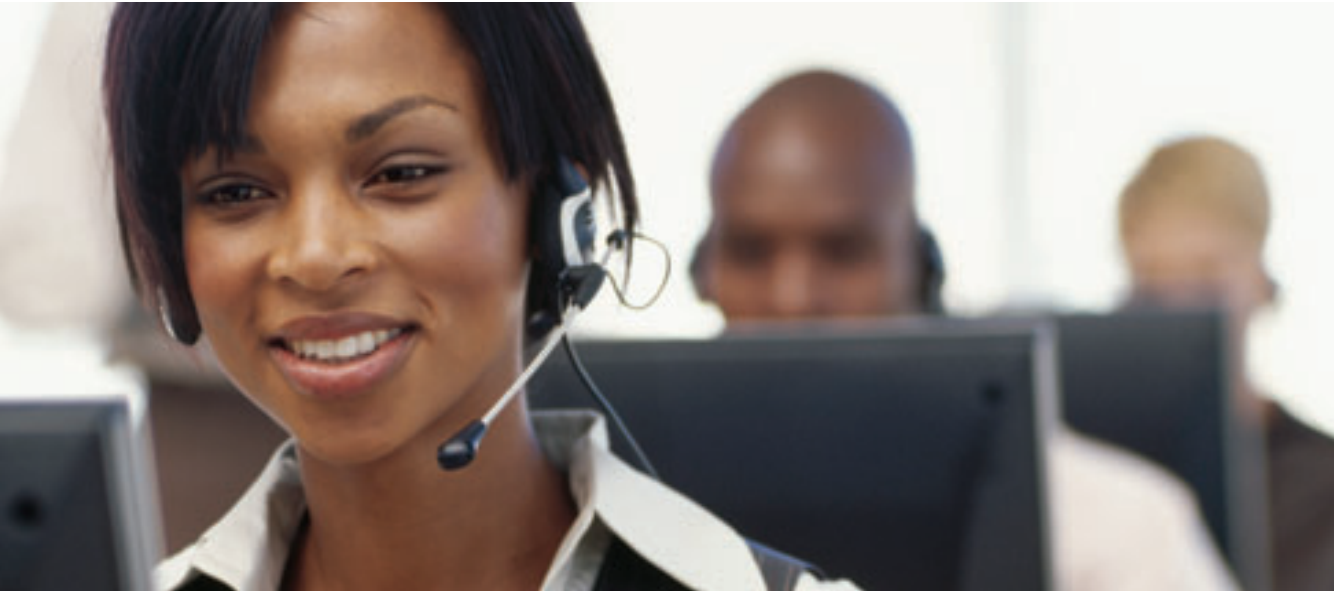
*The Power of Business-Critical Continuity™ Working for You*



**EMERSON™**  
Network Power

## *The Business-Critical Continuity™ Promise*

*Business-Critical Continuity™* is our promise that your critical technology investments will not go down and disrupt your business. Emerson Network Power consistently anticipates your rapidly changing business environment, to ensure that your business backbone is protected and always running. By partnering with us, you can feel confident that your business is prepared from grid-to-chip and will operate continuously, despite the unknown. So you can focus on building competitive advantage for ongoing growth and success.



## Emerson Network Power

### *Business-Critical Continuity™ to keep you going strong*

Regardless of your size, you can't afford for your critical business systems to go down. At Emerson Network Power, we've built our capabilities – and stake our reputation – on delivering reliable power, precision cooling, connectivity and embedded solutions so your technology investment can keep delivering at its peak.

Emerson Network Power's broad technology offering and deep expertise support a full spectrum of enterprise-wide solutions for today's vital business needs. Around the world, customers like you count on us to get the most out of their critical investments, knowing that we deliver purpose-driven innovation and optimized solutions from a single global source, one that is backed by local service and support.

Our ability to keep your network infrastructure up and running, regardless of whether the content is voice, data or multi-media, comes from a time-tested grid-to-chip portfolio of products, services and systems that can maintain a wide range of computing, telecom, healthcare and industrial applications. The result is a level of confidence achieved only by partnering with Emerson Network Power.

We're here to prepare you for the unknown, whatever comes your way, navigating with you through changing business environments and the uncharted demands they place on your technology investment. That's what we mean by *Business-Critical Continuity™*.



## We are Emerson.

### Emerson. Consider It Solved.

Customers call on Emerson when the stakes are the highest. Why? Because they know that we bring them technology and engineering to create solutions for their success. Whatever their challenge, they know that with Emerson by their side, they can “Consider It Solved.”

Emerson Network Power is a business of Emerson, a world leader in bringing together technology and engineering to create solutions for the benefit of its customers. Emerson’s goal is to design, produce and deliver products, systems and services that improve the lives of people everywhere.

Founded in 1890, Emerson consistently has been a symbol for technology innovation and operational excellence. Emerson’s proven management model and track record of growth have extended the company’s legacy through the years with an ongoing commitment to invest in new technologies. For businesses around the world, the Emerson® brand stands for the ability to help customers get the big things done, through global engineering, technology, industry expertise and customer focus.



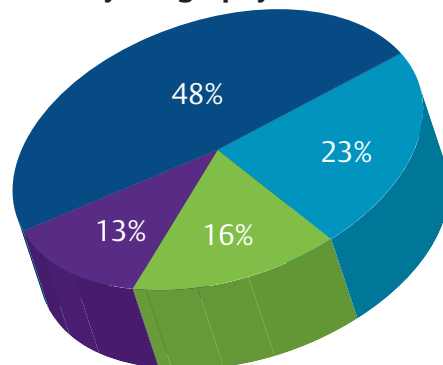
### Emerson 2007 Profile

#### Sales Up 12%

FY 07 Sales \$22.6B

FY 06 Sales \$20.1B

#### Sales by Geography



- Europe/Middle East/Africa
- Rest of World
- Asia
- United States & Canada



## *Technology and solutions for a world in action*

*In addition to Emerson Network Power, Emerson products, solutions and services serve the needs of customers through these distinct industry platforms.*

### ■ **Emerson Process Management**

Total process industry solutions that optimize process plant production through intelligent field devices, performance software and consulting and engineering services

### ■ **Emerson Climate Technologies**

Industry-defining heating, ventilating, air conditioning and refrigeration technologies and systems for commercial and residential applications

### ■ **Emerson Storage Solutions**

Innovative, sturdy and secure shelving and storage products that maximize usable square footage for residential, commercial and industrial locations

### ■ **Emerson Professional Tools**

A broad range of tools and equipment designed to maximize productivity and efficiency for professional trades and do-it-yourselfers

### ■ **Emerson Motor Technologies**

Leaders in innovative motor and drive solutions and customized technologies that power everything from consumer appliances to large industrial applications

### ■ **Emerson Industrial Automation**

Motion-control systems and components, plastics joining and precision cleaning and processing equipment, and materials-testing equipment and supplies for numerous and diverse industries worldwide

### ■ **Emerson Appliance Solutions**

World-class engineering and technologies for design and delivery of integrated appliance solutions for residential and commercial markets

For more information on Emerson's business platforms, visit **Emerson.com**.



## Emerson Network Power. The global leader in enabling *Business-Critical Continuity*<sup>™</sup>.

### *A commitment to best-in-class technologies*

When it comes to protecting critical infrastructures across the globe, breakthrough technology is at the heart of competitive advantage for any business. Emerson Network Power's 12 Centers of Expertise uniquely position us to provide systems and integrated solutions wherever our customers are located, meeting the world's ever-growing need for *Business-Critical Continuity*<sup>™</sup> across all industries. We continually invest in research and development – and most importantly – in people with the right expertise, in order to help prepare our customers for whatever changes come their way. Not only are we the experts in manufacturing and designing great technology, but we are the largest provider of services for critical infrastructures anywhere in the world. Emerson Network Power's services are broad enough to fit the entire range of equipment in your critical space, and we specialize in the latest tools and procedures you can depend on.

#### **Emerson Network Power global service coverage**

- Over 150 service locations worldwide
- 2,000 certified professionals with knowledge and expertise in local safety, environmental and labor specifications

#### **Emerson Network Power global design resources**

- Total E&D Engineers: > 2,900
- Number of PhDs: > 40
- Number of active patents: > 1,000





## Global manufacturing capabilities



To succeed in the global economy, Emerson Network Power has located design and manufacturing centers strategically throughout the world, strengthening our customers' global capabilities, while meeting their specific needs for local service and support in over 150 countries worldwide.



## Centers of Expertise

When you partner with Emerson Network Power for your *Business-Critical Continuity™* needs across your enterprise, you benefit from more than products to support and protect your technology infrastructure. Developing such a wide range of technologies also gives us in-depth industry knowledge and a “big-picture” understanding of how all systems must work together within any critical environment.

We deliver this knowledge through Emerson Network Power’s Centers of Expertise, distinct areas of world-class products and services that help you determine what you need and where, depending on your application. All so that you can keep your business moving forward for your customers.

### ■ **AC Power**

Sustaining critical operations that simply can’t go down. We deliver a full range of uninterruptible Liebert® AC power systems and associated power distribution and enclosures, from individual products to integrated systems that keep network closets, computer rooms and data centers up and running.

### ■ **Connectivity**

Keeping your voice, video and data flowing smoothly and quickly. We deliver connectivity solutions when and where they’re needed, through a full line of products – including fiber optic, radio-frequency and microwave-coaxial product sets – that safeguard network reliability.

### ■ **DC Power**

Supporting voice and communications networks with dependable DC power. We’ve built on trusted names – Lorain, Actura and PS – to create the NetSure™ DC Power technology platform, the next-generation global technology platform that delivers the most rigorous network-power applications, with an unparalleled breadth of intelligently engineered DC power, distribution, control and monitoring systems.

### ■ **Embedded Computing**

Reducing time to market and software-development costs for the telecom industry. We deliver comprehensive, highly integrated platform solutions that draw on our deep expertise, plus a full line of products that bring real competitive advantage.

### ■ **Embedded Power**

Making power conversion easy for IT and communications equipment. We deliver a broad offering of Astec® and Artesyn® solutions, including AC/DC and DC/DC power supplies, adapters, chargers and power accessories.

### ■ **Monitoring**

Managing critical equipment activity at multiple sites and site monitoring around the clock. We make it easy in today’s ROI-driven business environment, with 24x7 remote and self-monitoring systems and services that provide continuous oversight of data centers, computer rooms and network closets, as well as wireless, wireline and enterprise telecom applications.

■ **Outside Plant**

Protecting and moving voice, video and data electronics from the central office closer to the subscriber or optimizing cell-site infrastructure. We deliver a full line of enclosures, cabinets and shelters that meet the networked world's demands for high speed without interruption, from NetXtend™ integrated enclosure solutions to NetSpan™ Integrated FTTx solutions.

■ **Power Switching & Controls**

Safeguarding facilities from operational disruption in case of electrical abnormality. We deliver ASCO® power-transfer switches for an on-site power source that helps ensure power continuity for sensitive communications and data-processing electronics, as well as provides increased power control.

■ **Precision Cooling**

Maintaining precise temperature for reliable equipment performance. We deliver “chip-to-room cooling” – the most comprehensive range of Liebert precision-cooling solutions, which protect mission-critical applications from even the slightest increase in temperature.

■ **Racks & Integrated Cabinets**

Optimizing technology and performance needs for indoor IT applications. We deliver standard and customized integrated cabinet solutions that meet unique and specific needs, from Knürr and Liebert rack solutions for computer rooms of all sizes to integrated enclosures that include self-contained air conditioning, UPS and wiring management in a sturdy, lockable cabinet.

■ **Services**

Delivering network-reliability programs backed by the largest global services organization in the industry. We encompass engineering, installation, project management and total on-site operations management, preventive maintenance and energy-consumption monitoring.

■ **Surge Protection**

Defending power, voice and data moving through the network against grid irregularities and dangerous electrical disturbances. Depending on the application, we offer Liebert Interceptor® TVSS, Istatrol® filters and EDCO® protectors, which provide power protection to reduce downtime, save crucial man-hours and extend equipment life.





# Grid-to-chip protection for your critical investments

No other organization can match the scope of Emerson Network Power's product offerings and service reach, nor provide such complete grid-to-chip protection to ensure

*Business-Critical Continuity™*

for your technology investment.



1 AC Power

2 Connectivity

3 DC Power

4 Embedded Computing

5 Embedded Power

6 Monitoring

7 Outside Plant

8 Power Switching & Controls

9 Precision Cooling

10 Racks & Integrated Cabinets

11 Surge Protection

## Services

Emerson Network Power supports these Centers of Expertise with the largest global services organization in the industry, delivering:

- Design, installation and startup
- Warranty service
- Preventive maintenance
- 24x7 remote monitoring
- Emergency service
- Site audits





## Global solutions, local support

Delivering *Business-Critical Continuity™* to your world

All of the FORTUNE 500 companies and the biggest names in computing and communications around the world come to Emerson Network Power for support of their critical technology infrastructure. But we know that *Business-Critical Continuity™* can be just as important to small businesses as it is to the largest enterprise. Whether you are a global network service provider or a small Internet retailer, your business depends on staying connected to your customers. So our goal is to keep you moving forward and your business growing, despite the unknown.

“Emerson Network Power expanded the data-center capacity with a flexible and scalable mission-critical cooling system, eliminating heat-related equipment failures...all of a sudden, the help desk got quiet.”

– **Kent Hoyos**  
**CIO**  
**Pomona Valley Hospital Medical Center**  
**USA**

*The Pomona Valley Hospital Medical Center is a 436-bed acute-care teaching hospital serving eastern Los Angeles and western San Bernardino counties. Nationally recognized as a Top 100 Hospital, Pomona Valley undertook a four-year project to eliminate paper-based processes. The introduction of the new technology into the data center increased the heat loads, threatening current operations and future technology deployments.*

*Pomona Valley turned to the Liebert XD family of high-density cooling solutions. Emerson Network Power not only eliminated heat-related equipment failures, but paved the way for future implementation of integrated electronic patient-accounting, physician-order and healthcare-record projects.*

“Emerson Network Power provides a truly integrated turnkey solution. We count on their expertise in power and energy management and equipment maintenance, as well as [their] proven reliability.”

– **Weerawat Kiatti Pongthaworn**  
**Vice President,**  
**Nationwide Operation and Support**  
**Advanced Info Public Service Company (AIS)**  
**Thailand**

*AIS is Thailand's leading mobile operator, providing market-leading wireless telecommunications services to over*



16.4 million users, 54 percent of the country's total mobile-subscriber base. With over 90 percent penetration in Bangkok, the company is now focused on building base stations to provide mobile service in towns and cities across Thailand.

AIS is turning to Emerson Network Power – a partner for the past several years – once again for customized solutions that support the company's changing needs. For the expansion initiative, Emerson Network Power is supplying low-voltage disconnect functionality to existing AIS power systems and heat-exchange solutions for the outdoor enclosures installed for AIS's GSM (global system for mobile) base installations, as well as ongoing support for existing turnkey solutions.

**“We leave more specific services to our specialized partners. That means we can concentrate on one simple principle: to always offer our customers considerably higher bandwidth and accessibility for the money.”**

**– Svante Jurnell**  
**CEO**  
**IP-Only**  
**Sweden**

IP-Only is an independent Swedish Internet and telecom operator serving customers with high demands for bandwidth, accessibility and reliability. The company's intense focus on the consistent delivery of clean, simple, yet very powerful services drives its business. “We do not spend our time and energy on anything other than what we do best,” says IP-Only CEO Svante Jurnell, “namely the development and delivery of infrastructure from fiber and data centers via transmission up to the IP level.”

As one of IP-Only's partners, Emerson Network Power supplies, delivers and installs prefabricated modular shelters for the distribution nodes in its network. These shelters are complete energy solutions, equipped with AC distribution, DC power, batteries, inverters, climate systems and diesel gensets.

The Emerson EnergyMaster™ system monitors the shelters and all other energy equipment in the network.

**“Emerson Network Power delivers quality, reliable solutions and technical assistance that meet our specific needs. These solutions enable reliability and continuity to the bank's critical installations.”**

**– Julio Cesar De Conti**  
**Infrastructure Director**  
**Itaú Holding Financeira S.A.**  
**Brazil**

Itaú Bank is one of the largest private banks in Brazil. With consolidated equity of approximately \$6.4 billion and assets of \$62 billion, Itaú reached market capitalization of approximately \$26 billion at the end of 2005. Its shares are negotiated on the stock exchange of São Paulo, Buenos Aires and New York. Since 2002, Itaú has held the status of Financial Holding Company, conferred by the Federal Reserve Board.

When Itaú required more reliability and availability for its infrastructure, the bank turned to the Liebert Series 610 and Liebert static-transfer switches to meet the challenge. This new system was added to two existing Liebert UPS systems, enabling the first triple bus system in Brazil. “Emerson Network Power's products and engineering can offer a complete solution to any infrastructure need in a critical IT environment,” says Mr. Julio.

# Global Headquarters

			Phone	Fax
<b>Americas</b>				
Emerson Network Power Systems	AC Power, DC Power, Monitoring, Outside Plant, Power Switching & Controls, Precision Cooling, Racks & Integrated Cabinets, Services, Surge Protection	Columbus, OH, USA (Global Headquarters)	+1.614.888.0246	+1.614.841.6882
		Pompano Beach, FL, USA (Latin America Headquarters)	+1.954.984.3400	+1.954.984.3450
Alber	Battery Monitoring	Pompano Beach, FL, USA	+1.954.623.6660	+1.954.623.6671
ASCO	Power Switching & Controls	Florham Park, NJ, USA	+1.800.800.2726	+1.973.966.5709
Energy Systems	DC Power, Outside Plant, Services	Warrenville, IL, USA	+1.630.579.5000	+1.630.579.5050
Liebert	AC Power, Monitoring, Precision Cooling, Services	Columbus, OH, USA	+1.614.888.0246	+1.614.841.6882
Surge Protection	Surge Protection	Binghamton, NY, USA	+1.607.724.2484	+1.607.722.8713
Emerson Network Power Embedded Computing & Power	Embedded Power, Embedded Computing	Carlsbad, CA, USA	+1.760.930.4600	+1.760.930.4700
Emerson Network Power Connectivity Solutions	Connectivity	Bannockburn, IL, USA	+1.847.739.0300	+1.847.739.0301
<b>Asia Pacific</b>				
Emerson Network Power Systems	AC Power, DC Power, Monitoring, Outside Plant, Power Switching & Controls, Precision Cooling, Racks & Integrated Cabinets, Services, Surge Protection	Hong Kong	+852.2572.2201	+852.2802.9250
Emerson Network Power Embedded Computing & Power	Embedded Power, Embedded Computing	Hong Kong	+852.2699.2868	+852.2699.1770
Emerson Network Power Connectivity Solutions	Connectivity	Shanghai, China	+86.21.5442.7668	+86.21.5442.7628
<b>Europe, Middle East &amp; Africa</b>				
Emerson Network Power Systems	AC Power, DC Power, Monitoring, Outside Plant, Power Switching & Controls, Precision Cooling, Racks & Integrated Cabinets, Services, Surge Protection			
Energy Systems	DC Power, Outside Plant, Services	Stockholm, Sweden	+46.8.721.6000	+46.8.721.7177
Liebert	AC Power, Monitoring, Precision Cooling, Services	Tognana, Italy	+39.049.971.9111	+39.049.584.1257
Knürr	Racks & Integrated Cabinets	Arnstorf, Germany	+49.8723.270	+49.8723.27.154
Emerson Network Power Embedded Computing & Power	Embedded Power, Embedded Computing	West Midlands, United Kingdom	+44.1384.842.211	+44.1384.843.355
Emerson Network Power Connectivity Solutions	Connectivity	Essex, United Kingdom	+44.1245.359.515	+44.1245.358.938

For a complete list of global locations, log on to [EmersonNetworkPower.com/locations](http://EmersonNetworkPower.com/locations).

## *Our vision*

Smart anticipation of our customers' rapidly changing business environments makes Emerson Network Power the singular choice for best-in-class technologies and integrated power solutions worldwide.

Emerson Network Power.  
The global leader in enabling Business-Critical Continuity.™

**Emerson Network Power.**

The global leader in enabling *Business-Critical Continuity*™.

- |                |                      |                              |                               |
|----------------|----------------------|------------------------------|-------------------------------|
| ■ AC Power     | ■ Embedded Computing | ■ Outside Plant              | ■ Racks & Integrated Cabinets |
| ■ Connectivity | ■ Embedded Power     | ■ Power Switching & Controls | ■ Services                    |
| ■ DC Power     | ■ Monitoring         | ■ Precision Cooling          | ■ Surge Protection            |

**EmersonNetworkPower.com**

Emerson is a registered trademark, Emerson. Consider It Solved is a trademark and Business-Critical Continuity, Emerson Climate Technologies and Emerson Network Power are trademarks and service marks of Emerson Electric Co. All other trademarks are the property of their respective owners.  
©2008 Emerson Electric Co. E-1025 108

**EMERSON. CONSIDER IT SOLVED.™**